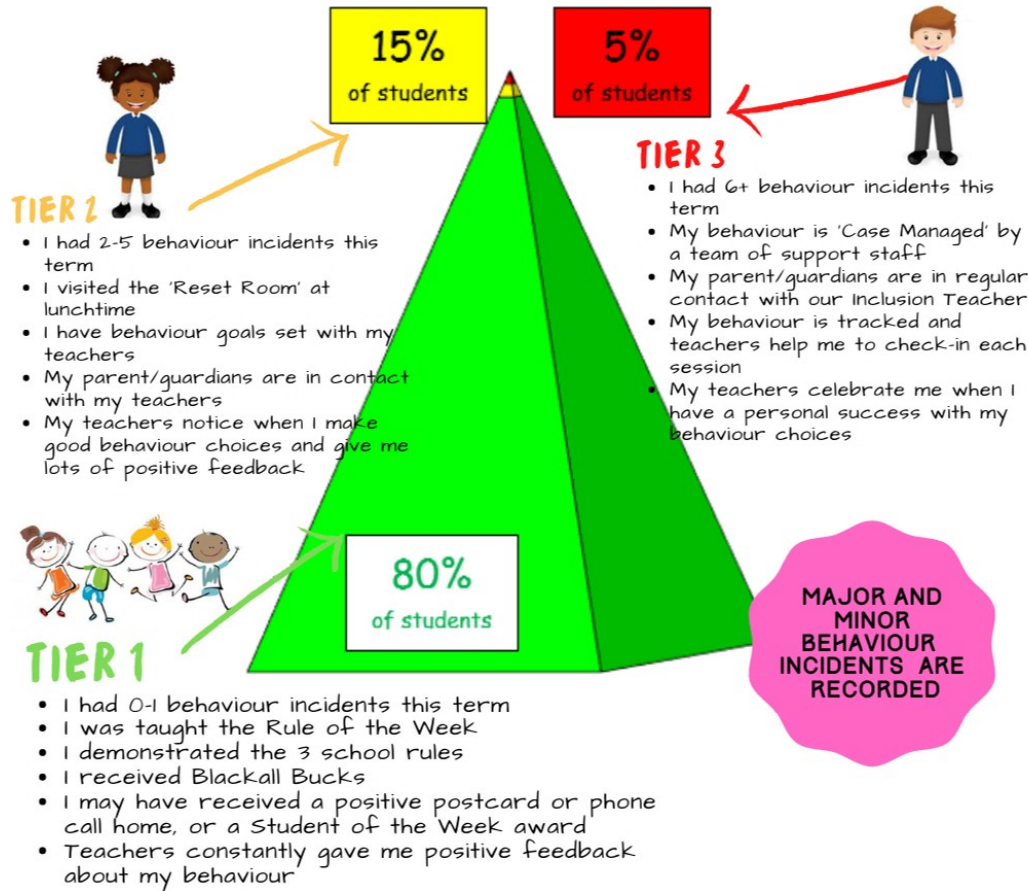


HOW IS PBL DATA USED?

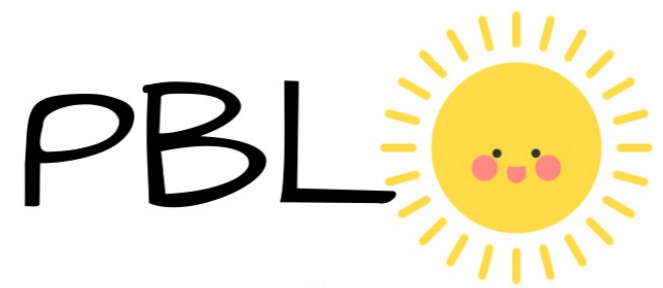
School-wide data is collected and analysed by the PBL team. This identifies patterns of behaviour within the school that need additional support to participate successfully.



STAFF COMMITMENT



Blackall State School staff are committed to using behavioural data to identify areas of difficulty for students. Then, behaviour skills are taught, practised and reinforced... Just like any other learning area!



Positive Behaviour for Learning



BE SAFE
BE RESPONSIBLE
BE RESPECTFUL

Behaviour Management at
Blackall State School

What is PBL?

PBL is a well-recognised system that is:

- evidence based
- a whole school approach
- based on teaching and reinforcing positive learning behaviours (rather than broadly expecting students to 'do the right thing')

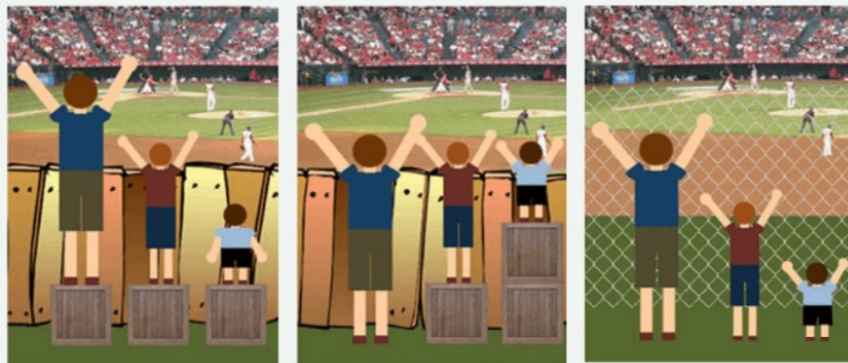


Inclusion

PBL helps to build our 'culture of inclusion'. This means:

- removing barriers
- ensuring every student achieves personal success
- supporting **all** student to feel calm, safe, supported and valued
- students are given what **they** need to feel successful - this may be different from child to child
- sometimes other students perceive these differences as 'favouritism' or 'unfair'
- **teachers and parent/guardians need to work together for students to understand that they will not be treated exactly the same way - but they will be treated FAIRLY**

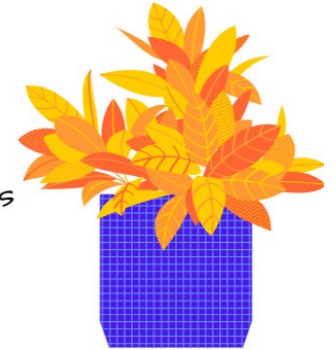
EQUALITY VERSUS EQUITY



Positive Behaviour

All staff foster a positive environment by consistently using a range of acknowledgements for positive behaviours.

- Constant positive feedback
- 'Blackall Bucks'
- Student of the Week Awards
- Positive Postcard mailed home
- Principal acknowledgement & shout outs
- Individual teacher initiatives
- End of Term celebrations!



Negative Behaviour



When responding to inappropriate behaviour, staff follow the same behaviour pathway. This pathway is designed to help **change** behaviour choices, rather than 'punish' 'bad behaviour'.

| BEHAVIOUR LEVEL | ACTION |
|-----------------|---|
| EXPECTATION | A staff member will set the behaviour expectation. You will receive Blackall Bucks for showing positive behaviour. |
| WARNING | <i>In class/playground:</i> A staff member will remind you of the rule and the appropriate behaviour. You will receive Blackall Bucks for showing you can correct your behaviour. |
| LEVEL 1 | <i>In class/playground:</i> A staff member will move you from the area. You need to make a choice to help your behaviour. |
| LEVEL 1 | Behaviour Reflection at Lunch Time You will complete a Behaviour Reflection with your teacher or in the Reset Room at lunchtime. <i>In playground:</i> You will go to the Office or Reset Room for the remainder of playtime. |
| LEVEL 2 | Buddy Classrooms You will visit your Buddy Classroom. You will also complete a Reflection Sheet with your teacher or in the Reset Room at lunchtime. You may follow further steps to help you reflect on your behaviour. Your behaviour is now a MINOR incident. |
| LEVEL 3 | Office You will be supported to the Office. Ms Hyde will contact your parents/guardians. You will follow a Behaviour Pathway to help you show appropriate behaviour at school. Your behaviour is now a MAJOR incident. |