

PBL NEWSLETTER

BLACKALL STATE SCHOOL COMMUNITY UPDATE

Dear Parents and Guardians,

Welcome back to Term 3 of PBL updates!

Term 3 often can show a decline in positive learning behaviours. Our teaching staff will be working hard to maintain consistency of expectations and following-through with consequences.

Staff also analyse PBL data and review what supports are in place to maximise engagement at school. You can help with this by working with your child's teacher and familiarising yourself with our behaviour management processes.

General reminders:

- Students in Primary school must have a hat for playtime.
- Mobile phones are not permitted to be in use at school and will be confiscated.

Upcoming:

- Week 10: Our PBL processes will be evaluated by a 'buddy school'. Staff and students may be asked about behaviour expectations and management at our school. This will contribute to our PBL Action Plan.



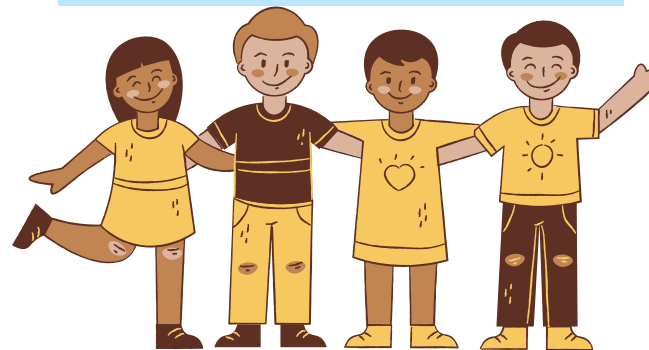
Our PBL Team welcomes input from our school community.

Team Leader - Anjii Bennett
abenn203@eq.edu.au

Team Coach - Georgia Barbeler
gjbar2@eq.edu.au

Or our parent/community representatives can pass along your ideas.

Meredith Dickson + Camille Kemp



Warm regards,

Your PBL Team

STUDENT BEHAVIOUR PROGRESS

ANALYSING DATA FROM WEEK 1 - 5 (TERM 3)

TIER 3



- I had 6+ behaviour incidents this term
- My behaviour is 'Case Managed' by a team of support staff
- My parent/guardians are in regular contact with Mrs Kelly (our Inclusion Teacher)
- My behaviour is tracked and teachers help me to check-in each session
- My teachers celebrated me when I had a personal success with my behaviour choices

TIER 2

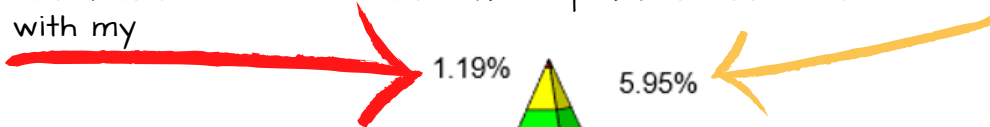


- I had 2-5 behaviour incidents this term
- I have visited the 'Reset Room' at lunchtime
- I have behaviour goals set with my teachers
- My parent/guardians are in contact with my teachers
- My teachers noticed when I made good behaviour choices and gave me lots of positive feedback



TIER 1

- We had 0-1 behaviour incidents this term
- We were taught the Rule of the Week
- We demonstrated the 3 school rules
- We received Blackall Bucks
- We may have received a positive postcard, phone call home, or a Student of the Week award
- Teachers constantly gave me positive feedback about my behaviour



BEHAVIOUR IMPROVEMENTS

- Less minor and major incidents compared to this time last term
- Tier 1 behaviours are well above the recommended 80% of students!

MOST FREQUENT INAPPROPRIATE BEHAVIOURS

- Non-compliance with routine
- Other conduct prejudicial to the good order & management of the school
- Verbal misconduct